

## Lobster - Gasket Insertion Tool



The Lobster GIT can be used to install gaskets in any flange positions, vertically, horizontally. The tooling is reusable and durable giving a return on investment after just ten gasket installations.

### Industries Served

Oil & Gas, Process, Utilities, Marine, Dredging, Desalination Plants, Aluminum Plants & steel Rolling Mills, Oil Tanking, EPCs & Contractors, OEM, Subsea and Pipeline contractors.

### Health & Safety

Safety is paramount in today's industry, the correct use of the Lobster GIT ensures that there are no injuries to employees' fingers, hands and arms during gasket installation. A combination of unsuitable methods being used to install gaskets, ranging from hands to simple tooling. Not only does this method cause injuries to employees but it also causes damage to the flanges face which ultimately will lead to product leakage. Both resulting in high costs for the employer.

Lobster GIT offers an enhanced solution for Flange Gasket Insertion ensuring a safer, faster, cost effective and more accurate method of installing **gaskets** between two mating flanges and is superior in quality.

Gasket Insertion Tools were originally designed for high pressure applications in the oil and gas industry where the installation of metallic ring type joints is challenging and has been problematical for decades.

Unlike other gasket insertion tools other gasket installation tools available in today's market, the Lobster is diversified and provides added benefits, not only used to install RTJ's (R/BX/RX/IX/SBX/SRX) but a variety of other gaskets used on raised face flanges such as Spiral Wound Gaskets, Kammprofile Gaskets, Metal Jacketed Gaskets, Solid Gaskets, Non Asbestos Gaskets to name a few.

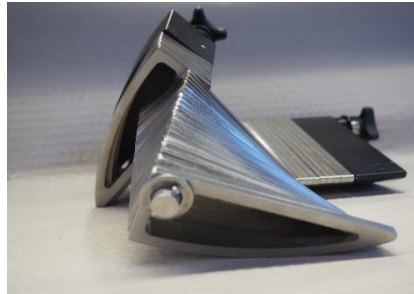
## Product Data Sheet

- Gaskets are easy to install as the Lobster GIT is light in weight and easy to handle, one-hand operating process allows single mounting of gaskets, reducing handling time.
- Many companies operate with a '**hands free protocol**', the use of the Lobster holding device means that the operator can work hands free offering significant advantages.

### The Lobster Material Specification

The Lobster Gasket Insertion Tool is manufactured in Austria / Europe using high quality materials.

- The body of Gasket Insertion Tool, is high tensile aluminum with anodic treatment, resistant against seawater, the same material as used in the aerospace, aviation and offshore industry.
- The clamp is produced from steel with a special treatment ensuring resistant against seawater.
- The screws and nuts are stainless steel seawater resistant.



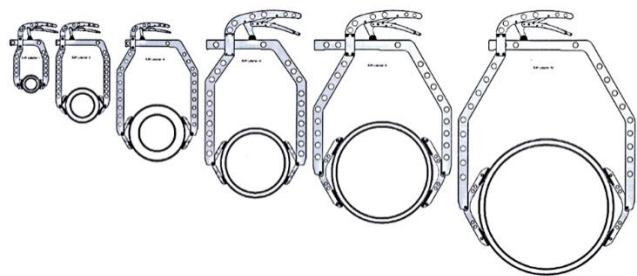
The Lobster holding devices are highly recommended especially working subsea, this enables the diver to work hand free.

- Fixed part is Aluminum with special anodic treatment
- Moving parts are stainless steel
- Fixing bolt is stainless steel

All the materials are **seawater resistant**, making the Lobster and Holding Devices ideal for offshore usage.

### Availability:

The Lobster Gasket Insertion Tool is currently available in seven different tool sizes that are used on variety of gaskets from OD 50mm to OD 1085 mm and circular, oval and octagonal shaped gaskets.



## Product Data Sheet

### Tool sizes and Dimensions

Lobster Tool Size	Gasket Outer Diameter		Gripper Size "G" (mm)	Tool Dimensions Width x Hight x Thick (mm)	Tool Weight (kg)
	mm	inch			
1	50 - 90	1,97 - 3,54	3	190 x 295 x 20	0,4
2	80 - 150	3,15 - 5,91	5	235 x 400 x 20	0,5
3	150 - 250	5,91 - 9,84	6	355 x 545 x 20	0,7
4	250 - 350	9,84 - 13,78	6	460 x 740 x 20	1,5
5	350 - 500	13,78 - 19,69	8	690 x 810 x 20	2,6
6	500 - 800	19,69 - 31,50	8	1080 x 1050 x 26	4,5
7	800 - 1085	31,50 - 42,72	10	1340 x 1220 x 28	8,8



### Holding devices

Lobster Holding Device set		Total Weight (kg)
Small	Holding device suitable for Lobster size 1, 2 and 3	0,6
Large	Holding device suitable for Lobster size 4, 5, 6 and 7	4,8

### Notes:

- Working subsea the Holding Device is recommended.
- The Lobster GIT does not require a lot of storage space.

*Under No circumstances will designer, manufacturer, MS4C and/or distributor(s) be held responsible or accept any liability for incorrect use or improper operation of the Lobster GIT that result in any kind of damage and/or injury.*

*The information contained in this data sheet is given in good faith and no liability will be accepted by the company in relation to this product.*

*We reserve the right to change the details given on this data sheet as additional information is acquired enabling us to update at any given time. The latest release of the data sheet is available on our website [www.GIT-Lobster.eu](http://www.GIT-Lobster.eu).*